



# AUCTION

**LEADING THE INDUSTRY SINCE 1945**

**Monday – November 25, 2019 – 12:00 PM**

## **Wood-Mizer LT-40 & LT-15 Sawmills – Kioti 4x4 Tractor W/ Loader**

**ONLINE BIDDING OFFERED ON LARGE EQUIPMENT!**

**Kubota Engines – Clark/JD Rough Terrain Forklift – Ebac Drying Kiln  
3 Pt Equipment – IH “H” Tractor – Rough Sawn Lumber & Slabs**

**ABSOLUTE AUCTION, All sells to highest bidder(s) on location:  
4102 Greenwich Rd., Norton, OH 44203**

**Directions:** Take Rt. I-76/Rt. 224 west of Akron or east of Wadsworth to exit 11 (Rt.261/Wadsworth Rd.) and go east on Rt. 261 to S. Medina Line Rd. and head south to Greenwich Rd. and east to address. Or take Greenwich Rd. west of Cleveland Massillon Rd. to address.



Information is believed to be accurate but not guaranteed.



**330.455.9357 • kikoauctions.com**



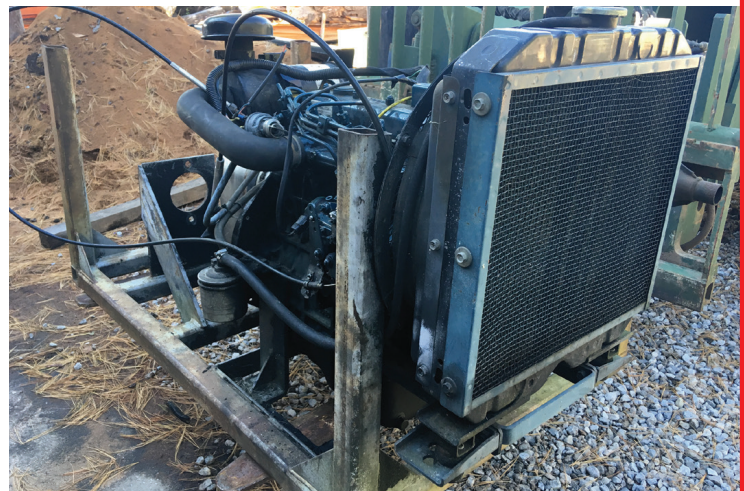


Be on time, not a large auction! All equipment serviced regularly and being used up to week of sale!

**Sawmills – Kiln – Motors – Lumber – Etc.:** '97

Wood-Mizer LT40 Super Hydraulic automated mill, Kubota 4cyc diesel engine w/approx 800 hrs, 36"x20'4" log capacity, 2,921 machine hrs, Vin#456B62414UNBF9693 – 2010 Wood-Mizer LT15 manual mill, Kohler Command Pro 15HP engine, 28"x17'6" log capacity – Wood-Mizer lap siding/shape shingle 12' jig attachment for LT 40 or 15 mill - 1000 bd ft. Ebac dehumidifier kiln w/ STC1 controller, 13'6" w x 4'd x 4't – 4cyc 1505 Kubota diesel power unit approx. 2000 hrs – (2) Kubota D950 diesel 3cyc engines – 4 of HD lumber racking – Rough sawn lumber inc. approx 1800 bd ft Red Oak, 700 bd ft White Oak, 350 bd ft hard & spalted maple – 150 bd ft black cherry – 250 bd ft 8/4 cherry – (3) walnut slabs, oak slabs, assorted timbers – Frick 36 twin blade edger – roller feed tables – 110V 20' transfer conveyor – HD roller table – Prentice 110 270deg rotation grapple – Delta 20" commercial HD planer w/new spiral cutters, single phase – Niles 3000 bd ft dehumidifier kiln (needs serviced)

**Tractor – Forklift – Equipment – Trailer - Misc:** Nice Kioti DK35 SE 4x4 diesel tractor w/KL351 quick tach loader, dual remote, 540 pto, rops, rear 3pt control and quick extend arms, 2554 hrs – quick tach 7' material bucket & pallet forks – Clark-John Deere rough terrain forklift, dual stage mast w/tilt and side shift, 4cyc diesel engine, 1713hrs – HD Bush Hog 6' box blade w/scarf teeth – Woods Cadet 60 bush hog – HD 3pt carry-all – 6' york rake – King Kutter 5' finish mower – IH Farmall "H" tractor needs some work – IH two bottom little genius pull type plow – HD 14k gw equipment trailer w/dual torsion axles – (4) Buyers & Snow EX salt spreaders – 80gal alum fuel tank – 36 gal truck fuel tank – 300gal tank – M glow compressor – hyd calendars 4"&5" - sm engine parts – radiators, alternators, pulleys, bearings, 3hp single phase motor – Craftsman air compressor – sm engine stands – 14'x8' steel truck flat bed - Sawdust/topsoil compost pile mixture pile.



**Terms On Chattels:** Driver's license or State ID required to register for bidder number. Cash, Check, Debit Card, Visa, or Master Card accepted. 9% buyer's premium on all sales; 4% waived for cash or check. Information is believed to be accurate but not guaranteed. Multi Par auction process may be used.

**Auction By Order Of:** Sam J. Hubby



Auctioneer/Realtor®  
**EUGENE R. KIKO**  
330-495-0131  
genokiko@kikocompany.com



**330.455.9357 • kikoauctions.com**

